



## Product Description

With diffused, uniform and comfortable illumination effects, Innolite slim square recessed LED Panel downlights is a new upgrade replacement for all traditional recessed&surface luminaries, troffer and downlights in office, conference, school, living room and kitchen, etc.

With ultra thin design, this 1 inch thickness LED panel downlight makes the ceiling flat and perfectly embedded in the ceiling. With super brightness and high quality SMD LED chips, the lifetime of this panel downlight is over 25,000 hours to reduce hassle of frequently replacing ceiling LED lights in high ceiling. Unlike the traditional CFL lights, it is environment friendly without IR and UV radiation, mercury free.



## Product Specification

Model No.	31245
Power	12W
Finishing	White or Satin Nickel
Luminous Flux	800lm $\pm$ 10%
Mounting Option	Recessed
Input Voltage	175-265VAC or 85-265VAC
Color Temp (CCT)	2700K - 6500K
Energy Efficiency Class	A+
Beam Angle	120 degree
Color Rendering Index	$\geq$ 80 Ra
Power factor	$\geq$ 0.50
Start Time	<0.5S
Switching Cycle	$\geq$ 12,500
Life time	Up to 25,000 hours
Temp. Of Operation	-20° C to 40°C
Dimension	170x170mm
Cutout Size	155x155mm



## Product Certificates



## Related Products

Model No.	Wattage	Finishing	Luminous Flux	Mounting Option	Dimension
31241	3W	White/ Satin Nickel	200lm $\pm$ 10%	Recessed	85x85mm
31242	4W	White/ Satin Nickel	280lm $\pm$ 10%	Recessed	105x105mm
31243	6W	White/ Satin Nickel	400lm $\pm$ 10%	Recessed	120x120mm
31244	9W	White/ Satin Nickel	600lm $\pm$ 10%	Recessed	145x145mm
31246	15W	White/ Satin Nickel	1000lm $\pm$ 10%	Recessed	200x200mm
31247	18W	White/ Satin Nickel	1200lm $\pm$ 10%	Recessed	225x225mm
31248	20W	White/ Satin Nickel	1300lm $\pm$ 10%	Recessed	240x240mm
31249	24W	White/ Satin Nickel	1600lm $\pm$ 10%	Recessed	300x300mm



## Product show

**Slim Square Recessed LED Panel downlights**



**EFFICIENT HEAT DISSIPATION**

ACRYLIC PANEL



SPRING BUCKLE

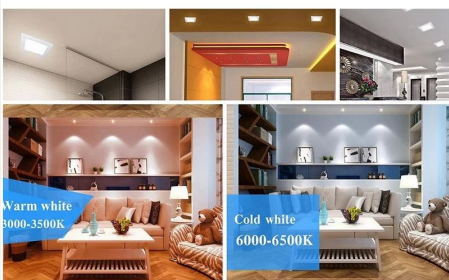


HI-QUALITY DRIVE



**Features & Advantages**

	<p>Dimmable</p>	<p>No flicker</p>
	<p>Hg</p>	<p>CRI&gt;80</p>
	<p>F</p>	<p>IP 20</p>





## Advantages

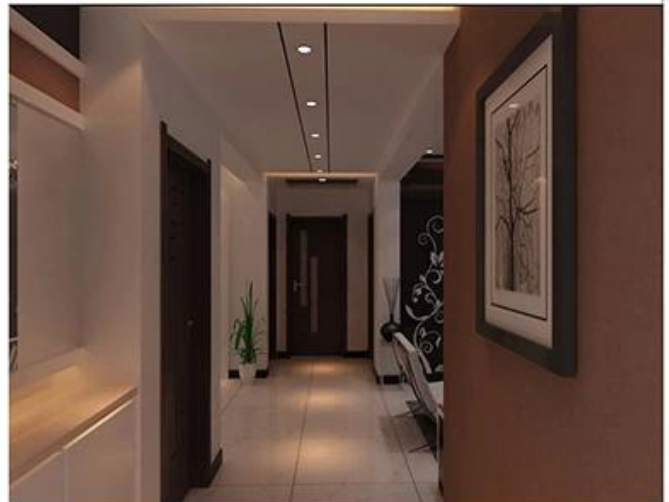
- 2 High brightness 100lm/w
- 2 Thin and strong aluminum alloy frame structure and not easily deformed
- 2 Easy and quick installation to save labor costs
- 2 No flicker to protect human eyes
- 2 High CRI > 80 ensures more vivid and natural light
- 2 Environment friendly: No lead or mercury and No UV or IR Radiation
- 2 Long life time lasts up to 10 years (4 hours use per day)
- 2 Dimmable
- 2 Two years limited warranty based on average daily use of 4 hours
- 2 With certification of CE RoHS TUV, etc.



## Application

Living room, bedroom, kitchen, conference, meeting room, show room, showcase, school, university, hospital, hotel, supermarket, department store, etc.

# Application





### **Attention Please,**

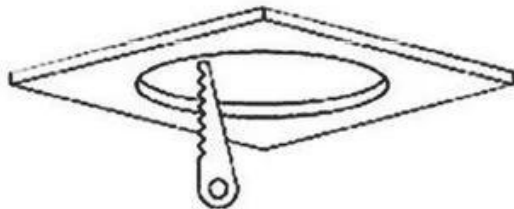
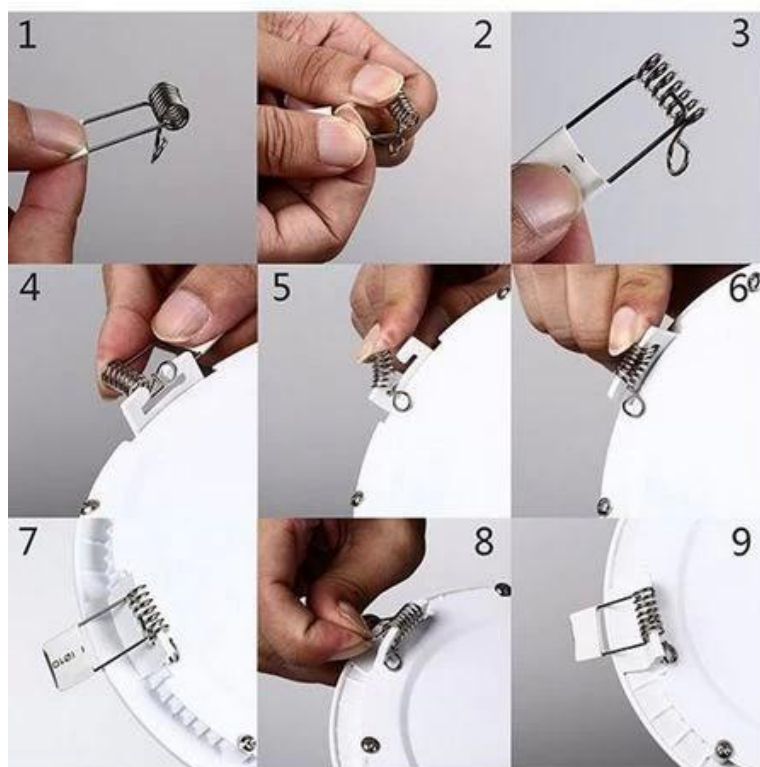
\*If you want to install panel led lights in bathroom, please NOT in shower place, but in dry side.

\*As their Size, please be careful about size, it have front and back size. Your CUT-HOLE Size CAN'T overtake its Front Size.

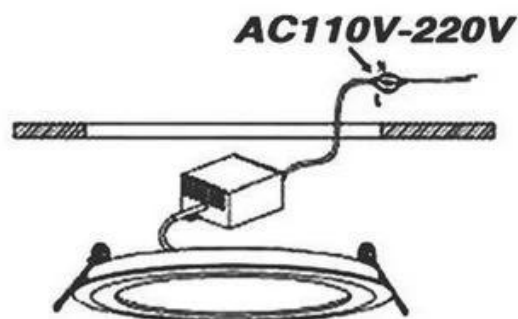
### **How to install it?**

- 1)First install two spring loaded clips in ceiling downlights
- 2)Connect power supply with household electrical wire(We have updated the power supply)
- 3)Put ceiling lights into the hole
- 4)The spring loaded clip automatically clasp the ceiling, finish.

# Installation instructions



**1. Trepanning**



**2. Connection**



**3. Installation**



**4. Done**

## Operation and maintenance

- <sup>2</sup> Ambient temperature range -20° C to 40°C.
- <sup>2</sup> Store and use the bulb/lamp the same way as traditional bulb/lamp.
- <sup>2</sup> Check your fixtures are properly wired and don't deliver voltage spike to bulb/lamp causing overheating/failure.
- <sup>2</sup> Bulb/lamp should be kept free from contamination.
- <sup>2</sup> Good condition of the lamp-holder contacts is important to ensure proper operation of bulb/lamp.
- <sup>2</sup> Switch off mains supply before installing or removing bulb/lamp.
- <sup>2</sup> Ensure bulb/lamp is cool before removing.

**Warning:** Discontinue use if damaged.



**Package**

1 pc led bulb per color box, then 20pcs packed in one standard export carton.(1pc/color box,20pcs/carton)



## Return Policy

We provide a free TWO YEARS LIMITED WARRANTY based on average daily use of 4 hours for this item.

Should returns be required:

Step 1) Contact us with this website email.

Step 2) Provide as much detail as possible about the problem you are having.

Step 3) Authorization to return the item will be issued.

Step 4) Return the item for the agreed replacement or refund.

## FAQ

Q1.Are you a manufacturer?

A1: Yes, we are an experienced manufacturer with our own molds and production lines.

Q2.How about quality of products?

A2: Our technicians and QC teams test the products one by one using aging line, professional devices and instruments to ensure the quality for all products.

Q3.How about price?

A3: We are a manufacturer and always offer our customers the most competitive prices.

Q4.How to place an order?

A4: Contact with online service, or sent email to us directly, we will reply to you with product price, specifications, packing etc. soon. Thank you.

Q5.May I buy samples from you?

A5: Yes! You are welcome to place sample order to test our superior quality and service, mixed samples are acceptable.

Q6.Can I visit your factory?

A6: Yes, welcome to visit our factory at your convenient time.

Q7.How can I make OEM or ODM orders?

A7: We have different print processing for different OEM/ODM orders. Please contact us with online service or send email to us directly.

Q8. How should I pay for my orders?

A8: You can pay by T/T, L/C at sight would be available for qualified bank and MOQ required for each order.



**Logistics**

Sample order ship by DHL, UPS, FedEx, TNT, EMS etc  
 For mass order delivery, can be optional with terms of Exwork, FOB, CNF, CIF by air or by sea based on the buyer's forwarder or ours



**Certifications**



**Exhibition & Fair**



**Factory Show**

