



## Product Description

INNOLITE Full glass COB GU10 LED([GU10 MR16 LED Spotlights manufacturer china](#)) spotlight 6W can create a cosy and warm ambient light with a similar halogen bulb finish. With latest COB LED technology, this 6W LED([GU10 MR16 LED Spotlights supplier china](#)) spotlight equivalent to an old 60W halogen GU10 bulb, offers similar brightness but saves up to 80% on energy bills and lasts fifteen times longer.

With alternative 38 degree or 60 degree beam angle□this 6W spotlight provides a focused bright beam which is perfect to use as down lighting or accent lighting in shop, office or at home, etc. Unlike the traditional halogen bulb, it is eco-friendly without mercury and no UV or IR radiation and is instant on to full brightness.

Meanwhile It is designed to provide quality dimming to create the right ambiance for any activity from relaxed to active atmosphere. Also, the CRI of INNOLITE GU10 bulb is always higher than 80 ra which can reflect colors truly and naturally.



## Product Specification

Model No.	36287
Power	6W
Luminous Flux	520 lm ± 10%
Equivalent to Halogen	60W
LED Type	COB
Input Voltage	220-240VAC or 110-130VAC
Material	Glass
Color Temp (CCT)	2700K - 6500K
Energy Efficiency Class	A+
Beam Angle	38 degree or 60 degree
Color Rendering Index	□80 Ra
Power factor	□0.5
Start Time	<0.5S
Switching Cycle	≥12,500
Life time	Up to 25,000 hours
Lamp Base	GU10
Dimensions	Dia.=50mm
	L=53mm



## Product Certificates

CE RoHS ErP SAA  FC



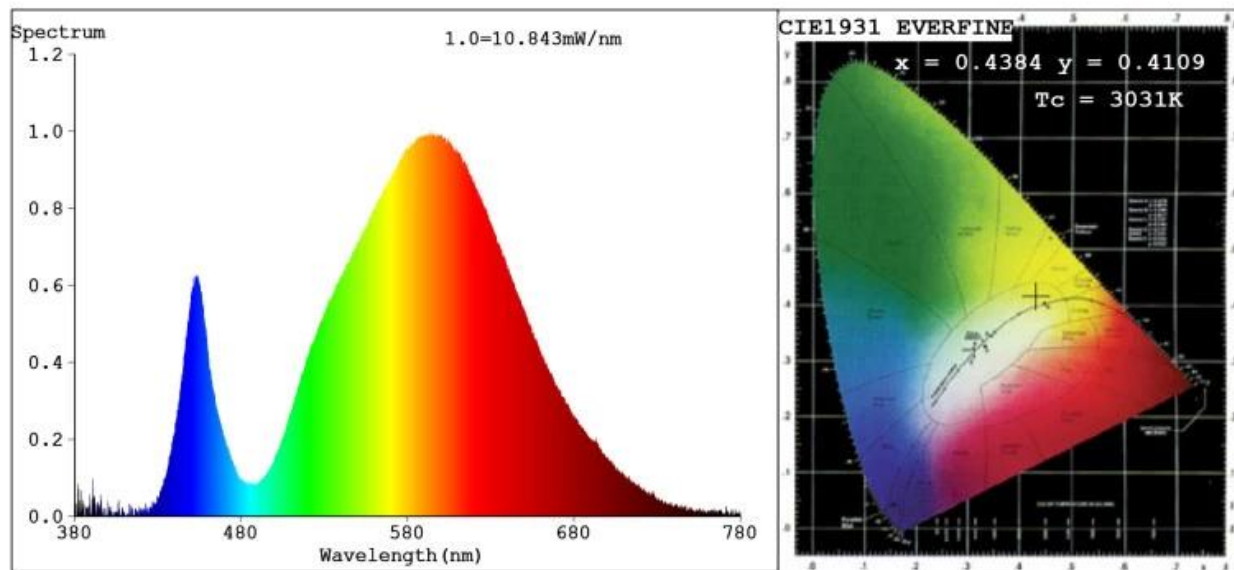
## Related Products

Model No.	Bulbs Type	Wattage(W)	LED Type	Luminous Flux(lm)	Equivalent Incandescent Bulb
36281	DR (Dichroic)	3W	COB	220lm $\pm$ 10%	25W
36282		5W		380lm $\pm$ 10%	40W
36283	AE (Aluminizing Eco)	3W		240lm $\pm$ 10%	30W
36284		5W		400lm $\pm$ 10%	45W
36285	AL (Aluminizing)	3W		260lm $\pm$ 10%	30W
36286		5W		450lm $\pm$ 10%	50W
36288	Full Glass	7W		600lm $\pm$ 10%	75W



## Product Test Report

## Spectrum Test Report



### Color Parameters:

Chromaticity Coordinate:  $x=0.4384$   $y=0.4109$   $u'=0.2486$   $v'=0.5243$

$T_c=3031K$  Dominant WL:Ld =581.8nm Purity=54.9%

Red Ratio:R=22.7% Peak WL:Lp=593.9nm HWL:Lhd=125.9nm

Render Index:Ra=71.9

R1 =69 R2 =81 R3 =91 R4 =67 R5 =66 R6 =71 R7 =81

R8 =49 R9 =0 R10=54 R11=60 R12=38 R13=71 R14=94 R15=63

### Photo Parameters:

Flux = 606.0 lm Eff. : 100.66 lm/W Fe = 1.727 W

### Electrical parameters:

V = 229.9 V I = 0.04800 A P = 6.020 W PF = 0.5440

LEVEL:OUT WHITE:ANSI\_3000K

Status: Integral T = 676 ms Ip = 49596 (76%)



Product show



CE RoHS ErP SAA ETL FC



## Advantages

- <sup>2</sup> 38° or 60° beam angle delivers down lighting or accent lighting
- <sup>2</sup> Up to 80% energy saving with COB LED technology: 6W LED equivalent to 60W halogen bulb
- <sup>2</sup> Retrofit size and classic design for traditional halogen look and feel
- <sup>2</sup> No flicker to protect human eyes
- <sup>2</sup> Dimmable
- <sup>2</sup> High CRI > 80 ensures more vivid and natural light
- <sup>2</sup> Environment friendly: No lead or mercury and No UV or IR Radiation
- <sup>2</sup> Long life time lasts up to 10 years (4 hours use per day)
- <sup>2</sup> Two years limited warranty based on average daily use of 4 hours

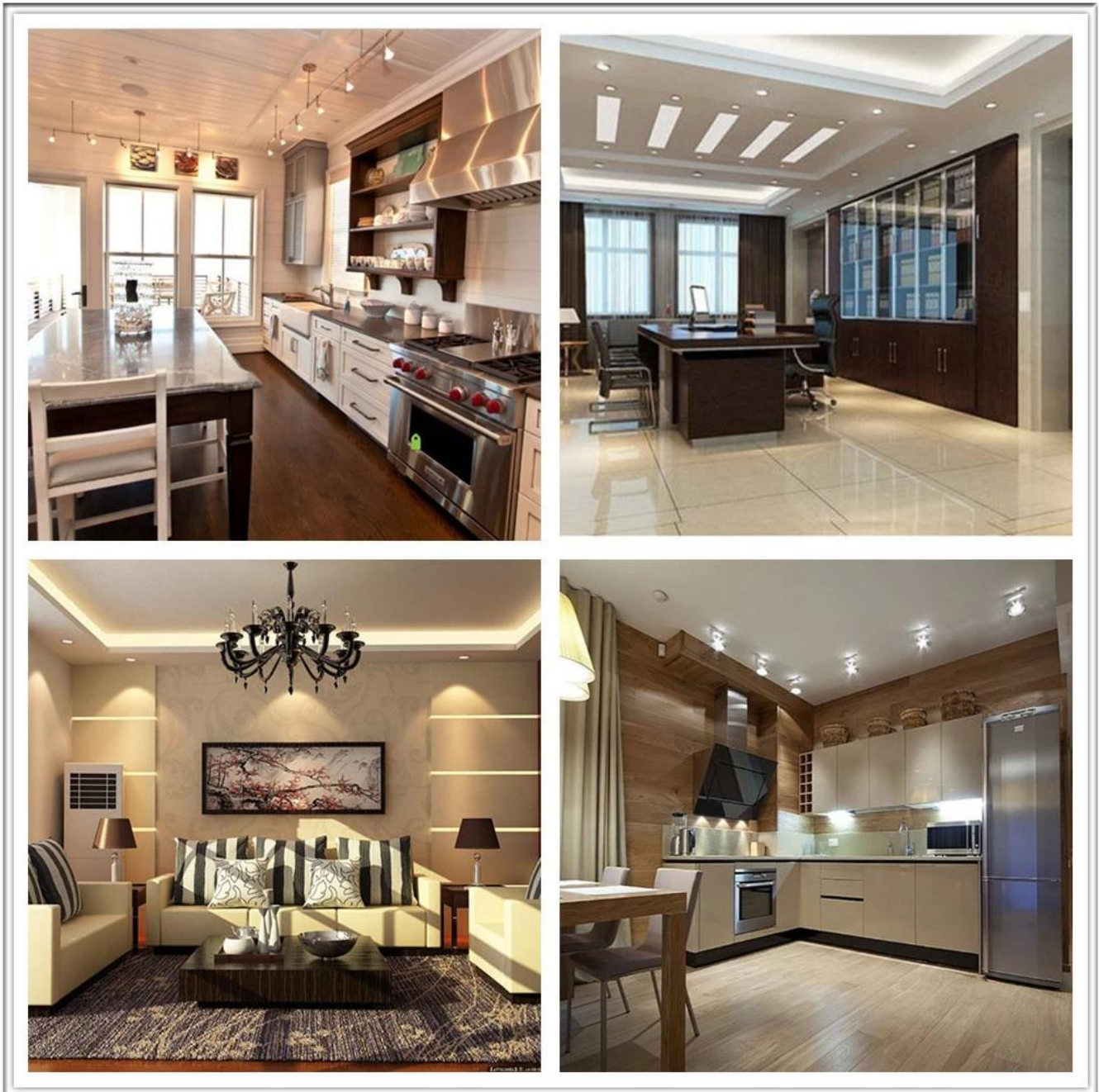


<sup>2</sup> With certification of CE LVD EMC RoHS ErP SAA ETL



## Application

Innolite full glass COB LED [\(GU10 MR16 LED Spotlights for sale china\)](#) GU10 Spotlight are widely used as down lighting or accent lighting in office, meeting room, show room, shop window, hotel, restaurant, library, KTV, hallway, living room, bedroom, bathroom, dining room, kitchen, etc.



## Operation and maintenance

<sup>2</sup> Ambient temperature range -20° C to 40°C.

<sup>2</sup> Store and use the bulb/lamp the same way as traditional bulb/lamp.

<sup>2</sup> Check your fixtures are properly wired and don't deliver voltage spike to bulb/lamp causing overheating/failure.

<sup>2</sup> Bulb/lamp should be kept free from contamination.

<sup>2</sup> Good condition of the lamp-holder contacts is important to ensure proper operation of bulb/lamp.

<sup>2</sup> Switch off mains supply before installing or removing bulb/lamp.

<sup>2</sup> Ensure bulb/lamp is cool before removing.

**Warning:** Discontinue use if damaged.



## Return Policy

We provide a free TWO YEARS LIMITED WARRANTY based on average daily use of 4 hours for this item.

Should returns be required:

Step 1) Contact us with this website email.

Step 2) Provide as much detail as possible about the problem you are having.

Step 3) Authorization to return the item will be issued.

Step 4) Return the item for the agreed replacement or refund.



## FAQ

Q1.Are you a manufacturer?

A1: Yes, we are an experienced manufacturer with our own molds and production lines.

Q2.How about quality of products?

A2: Our technicians and QC teams test the products one by one using aging line, professional devices and instruments to ensure the quality for all products.

Q3.How about price?

A3: We are a manufacturer and always offer our customers the most competitive prices.

Q4.How to place an order?

A4: Contact with online service, or sent email to us directly, we will reply to you with product price, specifications, packing etc. soon. Thank you.

Q5.May I buy samples from you?

A5: Yes! You are welcome to place sample order to test our superior quality and service, mixed samples are acceptable.

Q6.Can I visit your factory?

A6: Yes, welcome to visit our factory at your convenient time.

Q7.How can I make OEM or ODM orders?

A7: We have different print processing for different OEM/ODM orders. Please contact us with online service or send email to us directly.

Q8. How should I pay for my orders?

A8: You can pay by T/T, L/C at sight would be available for qualified bank and MOQ required for each order.

## Logistics

Sample order ship by DHL, UPS, FedEx, TNT, EMS etc

For mass order delivery, can be optional with terms of Exwork, FOB, CNF, CIF by air or by sea based on the buyer's forwarder or ours



## Certifications



## Exhibition & Fair



## Factory Show

