

## Product Description

INNOLITE 18W slim square recessed LED Panel downlights dimmable are ultra slim at just 25mm and suitable for slim recess depth. Although it is ultra thin, but it is still bright enough as adopting high lumen of LED chips. Unlike the traditional CFL light bulbs, these panel downlights are environment friendly without IR or UV radiation and mercury-free.

Meanwhile without flicker and instant on, it is a perfect replacement for all traditional recessed louver luminaires, troffer and downlights in office, conference hall, school, gym, etc.

## Product Specification:

Model No.	31247
Power	18 W
Finishing	White or Satin Nickel
Luminous Flux	1200 lm $\pm$ 10%
Mounting Option	Recessed
Input Voltage	175-265VAC or 85-265VAC
Power Factor	>0.50
Color Temp (CCT)	2700K - 6500K
Energy Efficiency Label	A+
Beam Angle	120°
Temp. of Operation	-20 ~ +40°C
Start Time	<0.5S
Switching Cycle	$\geq$ 12,500
Life time	Up to 25,000 hours
Cutout Size	210x210 mm
Dimensions	225x225 mm

## Product Certificates:

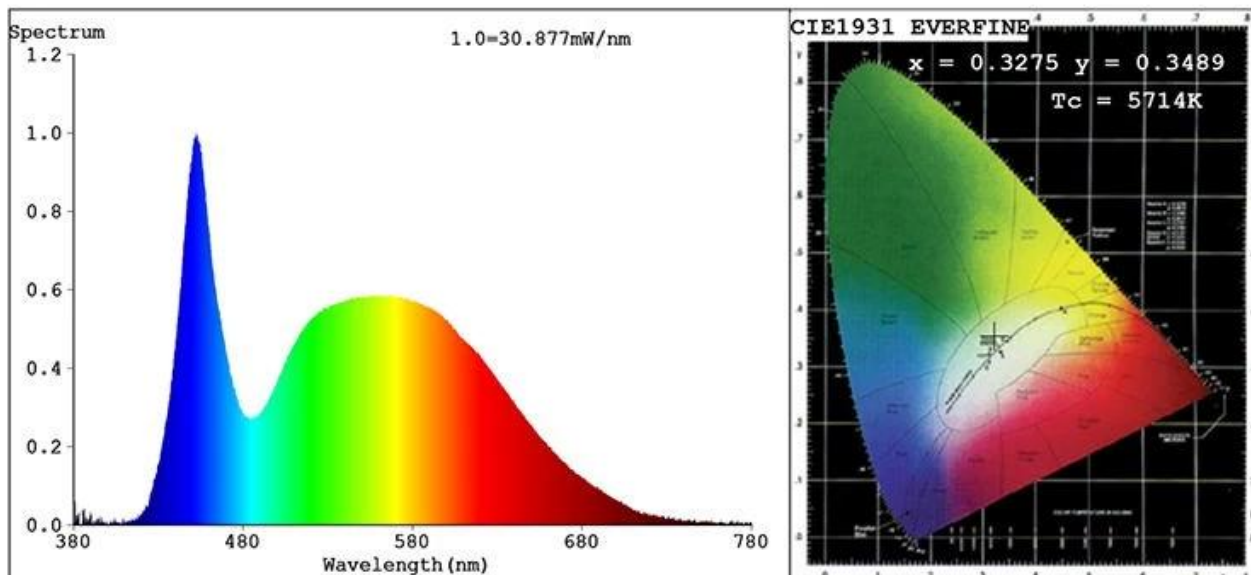
CE RoHS ErP SAA  FC

## Related Products

Model No.	Wattage	Luminous Flux	Cutout Size	Dimensions
31241	3W	200 lm $\pm$ 10%	75x75mm	85x85mm
31242	4W	280 lm $\pm$ 10%	95x95mm	105x105mm
31243	6W	400 lm $\pm$ 10%	105x105mm	120x120mm
31244	9W	600 lm $\pm$ 10%	130x130mm	145x145mm
31245	12W	800 lm $\pm$ 10%	155x155mm	170x170mm
31246	15W	1000 lm $\pm$ 10%	185x185mm	200x200mm
31248	20W	1300 lm $\pm$ 10%	225x225mm	240x240mm
31249	24W	1600 lm $\pm$ 10%	285x285mm	300x300mm

# Product Test Report

## Spectrum Test Report



### Color Parameters:

Chromaticity Coordinate:  $x=0.3275$   $y=0.3489$   $u'=0.2005$   $v'=0.4807$

$T_c=5714K$  Dominant WL:  $L_d=530.1nm$  Purity=3.3%

Red Ratio:  $R=15.2\%$  Peak WL:  $L_p=452.4nm$  HWL:  $L_{hd}=26.6nm$

Render Index:  $R_a=82.1$

$R1=79$   $R2=87$   $R3=92$   $R4=81$   $R5=80$   $R6=82$   $R7=88$

$R8=68$   $R9=5$   $R10=68$   $R11=79$   $R12=57$   $R13=81$   $R14=96$   $R15=74$

### Photo Parameters:

Flux = 1291 lm Eff. : 68.67 lm/W  $P_e = 4.019 W$

### Electrical parameters:

$V = 230.0 V$   $I = 0.08500 A$   $P = 18.80 W$  PF = 0.9630

LEVEL:OUT WHITE:OUT

Status: Integral  $T = 468 ms$   $I_p = 52922 (81\%)$

## Product show

## Slim Square Recessed LED Panel downlights



### EFFICIENT HEAT DISSIPATION

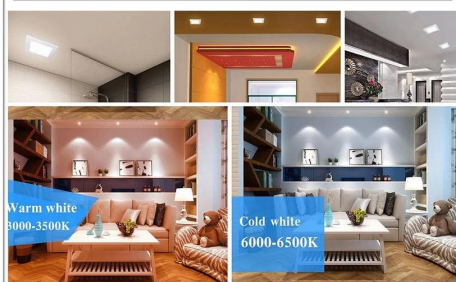
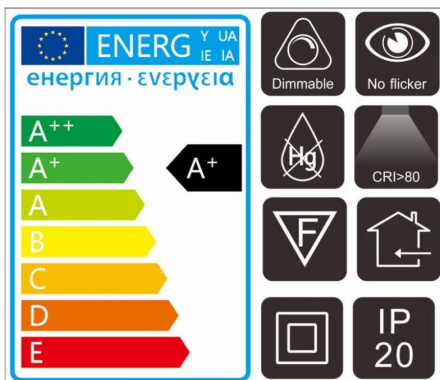
ACRYLIC PANEL

SPRING BUCKLE

HI-QUALITY DRIVE



### Features & Advantages



## Advantages

- With 120 degree wider beam angle
- Thin and strong aluminum alloy frame structure and not easily deformed
- Dimmable
- Easy and quick installation to save labor costs
- Soft light without flicker to protect human eyes
- High CRI > 80 ensures more vivid and natural light
- Environment friendly: No lead or mercury and No UV or IR Radiation
- Long life time lasts up to 10 years (4 hours use per day)
- Two years limited warranty based on average daily use of 4 hours
- With certification of CE LVD EMC RoHS, etc.

## Application

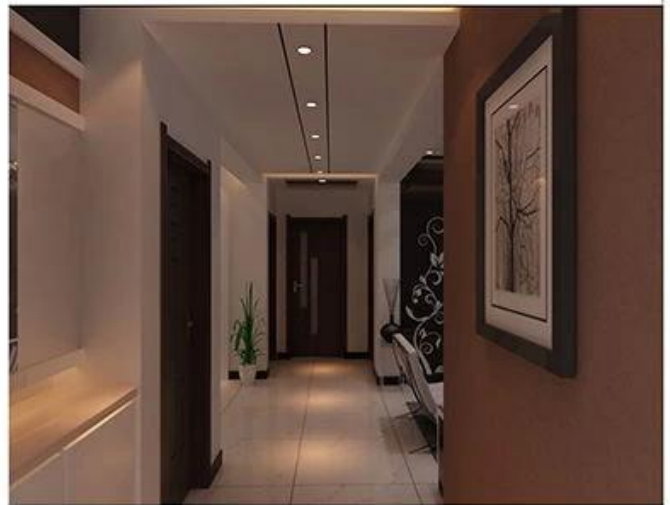
INNOLITE 18W slim square recessed LED panel downlights can give off a uniform and comfortable light with a slim square design. It is widely used in commercial lighting such as in conference hall, retail stores, offices, hotels, shops, hospitals, schools and restaurant, etc. Meanwhile, it also can be used in home lighting such as in living room, dining room, etc.

## Operation and maintenance

- Ambient temperature range -20° C to 40°C.
- Store and use the bulb/lamp the same way as traditional bulb/lamp.
- Check your fixtures are properly wired and don't deliver voltage spike to bulb/lamp causing overheating/failure.
- Bulb/lamp should be kept free from contamination.
- Good condition of the lamp-holder contacts is important to ensure proper operation of bulb/lamp.
- Switch off mains supply before installing or removing bulb/lamp.
- Ensure bulb/lamp is cool before removing.

**Warning:** Discontinue use if damaged.

# Application

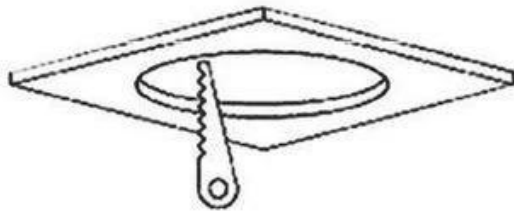
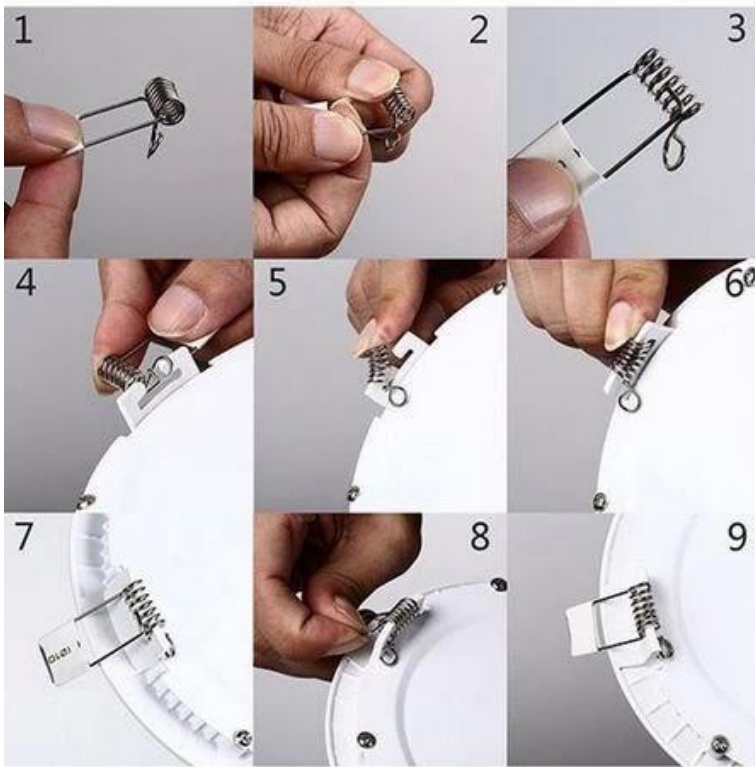


## Package:

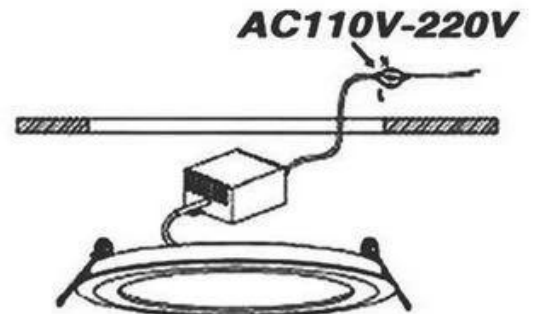
1 pc LED bulb per color box, then 20pcs packed in one standard export carton.(1pc/color box, 20pcs/carton)



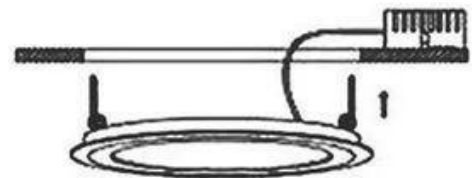
# ***Installation instructions***



**1. Trepanning**



**2. Connection**



**3. Installation**



**4. Done**

## **Return Policy:**

We provide a free TWO YEARS LIMITED WARRANTY based on average daily use of 4 hours for this item.

Should returns be required:

Step 1) Contact us with this website email.

Step 2) Provide as much detail as possible about the problem you are having.

Step 3) Authorization to return the item will be issued.

Step 4) Return the item for the agreed replacement or refund.

## **FAQ:**

Q1.Are you a manufacturer?

A1: Yes, we are an experienced manufacturer with our own molds and production lines.

Q2.How about quality of products?

A2: Our technicians and QC teams test the products one by one using aging line, professional devices and instruments to ensure the quality for all products.

Q3.How about price?

A3: We are a manufacturer and always offer our customers the most competitive prices.

Q4.How to place an order?

A4: Contact with online service, or sent email to us directly, we will reply to you with product price, specifications, packing etc. soon. Thank you.

Q5.May I buy samples from you?

A5: Yes! You are welcome to place sample order to test our superior quality and service, mixed samples are acceptable.

Q6.Can I visit your factory?

A6: Yes, welcome to visit our factory at your convenient time.

Q7.How can I make OEM or ODM orders?

A7: We have different print processing for different OEM/ODM orders. Please contact us with online service or send email to us directly.

Q8. How should I pay for my orders?

A8: You can pay by T/T, L/C at sight would be available for qualified bank and MOQ required for each order.

## **Logistics:**

Sample order ship by DHL, UPS, FedEx, TNT, EMS etc

For mass order delivery, can be optional with terms of Exwork, FOB, CNF, CIF by air or by sea based on the buyer's forwarder or ours



## Certifications





# Factory Show



Automatic SMT



Welding Line



Automatic Bulb Sealing Line



Driver Production Line



Assembly Line



Automatic Base Mounting Line



Automatic Aging Line



Life Time Testing



R&D Department



Office



Show Room



Factory Building

## Exhibition & Fair



# Exhibition & Fair

