

[4W Dimmable LED large globe light bulbs](#)  
[G200 spiral filament LED globe lights](#)  
[Extra large Flexible filament globe light bulbs manufacturer](#)



### Product Description

Innotech G200 spiral filament LED globe light is oversized for a dramatic vintage industrial look. With flexible spiral filament and vintage amber or smoke cover, it can create a welcoming glow that provides authenticity to any fixture. Meanwhile, it adds to a single pendant for a stunning effect.

This giant bulb is designed to provide quality dimming to create the right ambience for any activity, from relaxed to active atmospheres. The more you dim, the warmer the light. Meanwhile it is an eco-friendly product as without mercury and without IR or UV radiation.

The installation is very easy as the same international lamp base E26 E27 B22 E39 E40. Meanwhile with high technology LED, it can save up 80% energy and last 25 times longer than traditional incandescent bulb. Start to enjoy a nostalgic, safe and energy saving light now!



### Product Specification

Model No.	39631
Power	4W
Cover type	Clear Amber Smoke
Luminous Flux	200lm ± 10%
LED Filament Spec.	Spiral x 1
Input Voltage	220-240VAC or 110-130VAC
Material	Glass
Color Temp (CCT)	1800~3000K
Energy Efficiency Label	A+
Beam Angle	360°
Color Rendering Index	≥80 Ra
Power factor	≥0.5
Start Time	<0.5S
Switching Cycle	≥12,500
Life time	Up to 25,000 hours
Lamp Base	E26 E27 B22 E39 E40
Dimensions	Dia.= 200 mm
	L= 275 mm



### Product Certificates

CE RoHS ErP SAA  FC



## Related Products

Model No.	Bulb Type	LED Filament Spec.	Glass color	Wattage(W)	Dimension	Luminous Flux(lm)
39621	G160	Spiral x 1	Clear Amber Smoke	4W	Ø160x218mm	200lm ± 10%
39622	G180	Spiral x 1		4W	Ø180x240mm	200lm ± 10%
39632	G260	Spiral x 1		4W	Ø260x375mm	200lm ± 10%
39633	G300	Spiral x 1		4W	Ø300X395mm	200lm ± 10%



## Product show

# Giant Flexible LED Filament Bulb

Omnidirectional 360° beam angle

Exact retrofit for incandescent bulb

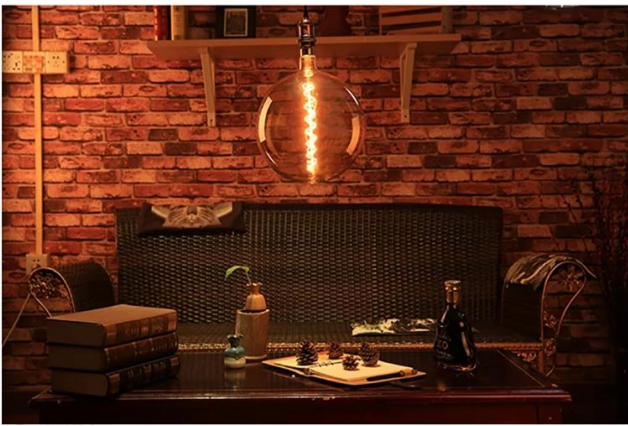
LED chip bonded on sapphire or ceramic substrate

Full glass housing with high-purity Helium filled for good heat release

Available in traditional base caps E27/B22/E26 etc.

Constant current IC driver inside for flicker free

## Features & Advantages





## Advantages

- <sup>2</sup> Super Warm, give off a full 360-degree warm glow
- <sup>2</sup> Up to 85% energy saving with new LED filament technology
- <sup>2</sup> No flicker to protect human eyes
- <sup>2</sup> High CRI > 80 ensures more vivid and natural light
- <sup>2</sup> Environment friendly: No lead or mercury and No UV or IR Radiation
- <sup>2</sup> Long life time lasts up to 10 years (4 hours use per day)
- <sup>2</sup> Dimmable
- <sup>2</sup> Two years limited warranty based on average daily use of 4 hours
- <sup>2</sup> With certification of CE LVD EMC RoHS ErP TUV, etc.



## Application

To create a trendy and romantic atmosphere with Innotech 4W large LED Spiral bulbs for decoration now. With flexible spiral filament, this big lamp is ideal for outdoor lanterns, ceiling fixtures, chandeliers, pendants and Squirrel Cage Lamp. Multiple places you'd like to decorate with, such as bedroom, living room, dining room, kitchen or party and so on.

### Operation and maintenance

- <sup>2</sup> Ambient temperature range -20° C to 40°C.
- <sup>2</sup> Store and use the bulb/lamp the same way as traditional bulb/lamp.
- <sup>2</sup> Check your fixtures are properly wired and don't deliver voltage spike to bulb/lamp causing overheating/failure.
- <sup>2</sup> Bulb/lamp should be kept free from contamination.
- <sup>2</sup> Good condition of the lamp-holder contacts is important to ensure proper operation of bulb/lamp.
- <sup>2</sup> Switch off mains supply before installing or removing bulb/lamp.
- <sup>2</sup> Ensure bulb/lamp is cool before removing.

**Warning:** Discontinue use if damaged.

# Application





## Package

1 pc LED bulb per color box, then 6 pcs packed in one standard export carton.(1pc/color box, 6 pcs/carton)



## Return Policy

We provide a free TWO YEARS LIMITED WARRANTY based on average daily use of 4 hours for this item.

Should returns be required:

Step 1) Contact us with this website email.

Step 2) Provide as much detail as possible about the problem you are having.

Step 3) Authorization to return the item will be issued.

Step 4) Return the item for the agreed replacement or refund.



## FAQ

Q1.Are you a manufacturer?

A1: Yes, we are an experienced manufacturer with our own molds and production lines.

Q2.How about quality of products?

A2: Our technicians and QC teams test the products one by one using aging line, professional devices and instruments to ensure the quality for all products.

Q3.How about price?

A3: We are a manufacturer and always offer our customers the most competitive prices.

Q4.How to place an order?

A4: Contact with online service, or sent email to us directly, we will reply to you with product price, specifications, packing etc. soon. Thank you.

Q5.May I buy samples from you?

A5: Yes! You are welcome to place sample order to test our superior quality and service, mixed samples are acceptable.

Q6.Can I visit your factory?

A6: Yes, welcome to visit our factory at your convenient time.

Q7.How can I make OEM or ODM orders?

A7: We have different print processing for different OEM/ODM orders. Please contact us with online service or send email to us directly.

Q8. How should I pay for my orders?

A8: You can pay by T/T, L/C at sight would be available for qualified bank and MOQ required for each order.

**Logistics**

Sample order ship by DHL, UPS, FedEx, TNT, EMS etc  
 For mass order delivery, can be optional with terms of Exwork, FOB, CNF, CIF by air or by sea based on the buyer's forwarder or ours



**Certifications**



**Exhibition & Fair**



**Factory Show**

