

Descripción del producto:

INNOLITE 18W delgado empotrable cuadrado LED Downlights del panel regulables son ultra delgadas a solo 25 mm y adecuado para una profundidad de hueco delgada. Aunque es ultra delgado, pero sigue siendo lo suficientemente brillante como la adopción de un gran flujo de chips LED. A diferencia de las bombillas CFL tradicionales, estos downlights de panel son ecológicos sin radiación IR o UV y sin mercurio.

Mientras tanto, sin parpadeo e instantáneamente, es un reemplazo perfecto para todas las lucerías empotradas tradicionales de louver, troffer y downlights en oficinas, salas de conferencias, escuelas, gimnasios, etc.

Especificaciones del producto:

N ° de Modelo.	31247
Poder	18 W
Refinamiento	Níquel blanco o satinado
Flujo luminoso	1200 lm \pm 10%
Opción de montaje	Empotrado
Voltaje de entrada	175-265VAC o 85-265VAC
Factor de potencia	> 0.50
Temp de color (CCT)	2700K - 6500K
Etiqueta de eficiencia energética	A +
Ángulo de haz	120 °
Temperatura. de operación	-20 ~ + 40 ° C
Hora de inicio	< 0.5S
Ciclo de conmutación	\geq 12,500
Toda la vida	Hasta 25,000 horas
Tamaño de corte	210x210 mm
Dimensiones	225x225 mm

Certificados de producto:

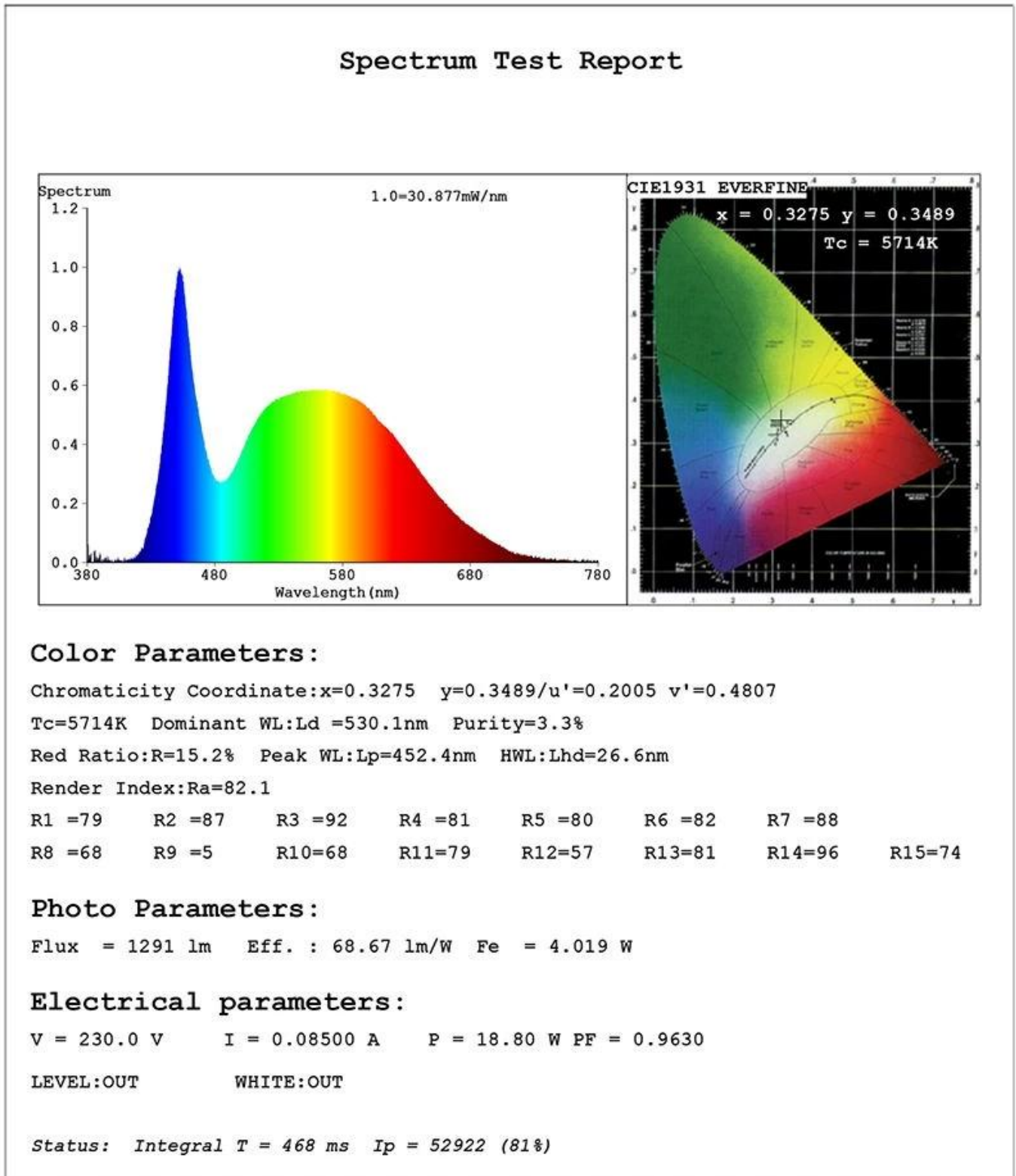


Productos relacionados

N ° de Modelo.	Potencia	Flujo luminoso	Tamaño de corte	Dimensiones
31241	3W	200 lm \pm 10%	75x75mm	85x85 mm
31242	4W	280 lm \pm 10%	95x95 mm	105x105mm
31243	6W	400 lm \pm 10%	105x105mm	120x120mm
31244	9W	600 lm \pm 10%	130x130mm	145x145 mm
31245	12W	800 lm \pm 10%	155x155 mm	170x170 mm
31246	15W	1000 lm \pm 10%	185x185 mm	200x200mm

31248	20W	1300 lm ± 10%	225x225 mm	240x240 mm
31249	24W	1600 lm ± 10%	285x285 mm	300x300mm

Informe de prueba del producto



Presentacion de producto

Slim Square Recessed LED Panel downlights



EFFICIENT HEAT DISSIPATION

ACRYLIC PANEL



SPRING BUCKLE

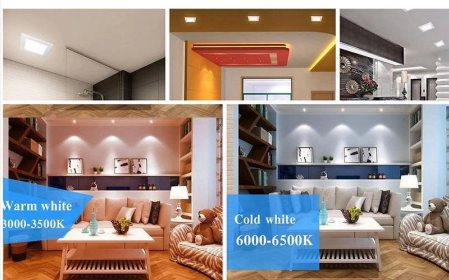


HI-QUALITY DRIVE



Features & Advantages

	<p>Dimmable</p>	<p>No flicker</p>
	<p>Hg</p>	<p>CRI>80</p>
	<p>F</p>	<p>IP 20</p>



Ventajas:

- Con ángulo de haz de 120 grados más amplio
- Estructura de marco de aleación de aluminio fina y fuerte y no se deforma fácilmente
- Dimmable
- Instalación fácil y rápida para ahorrar costos de mano de obra
- Luz suave sin parpadeo para proteger los ojos humanos
- High CRI > 80 garantiza una luz más viva y natural
- Amigable con el medio ambiente: sin plomo ni mercurio y sin radiación UV o IR
- El tiempo de vida largo dura hasta 10 años (4 horas de uso por día)
- Dos años de garantía limitada en base al uso diario promedio de 4 horas
- Con la certificación de CE LVD EMC RoHS, etc.

Solicitud

Los downlights de panel empotrado cuadrado empotrados INNOLITE de 18W pueden emitir una luz uniforme y cómoda con un diseño cuadrado delgado. Es ampliamente utilizado en iluminación comercial como en salas de conferencias, tiendas minoristas, oficinas, hoteles, tiendas, hospitales, escuelas y restaurantes, etc. Mientras tanto, también se puede utilizar en la iluminación del hogar, como en la sala de estar, el comedor, etc. .

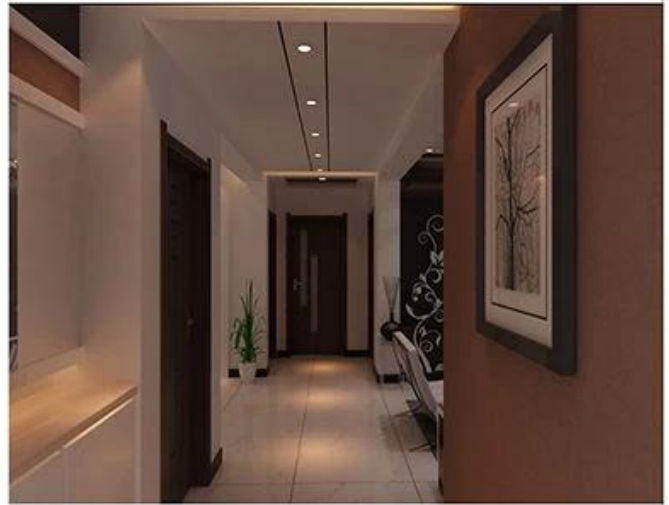
Operación y mantenimiento

Temperature Rango de temperatura ambiente -20 ° C a 40 ° C.

- Guarde y use la bombilla / lámpara de la misma manera que la bombilla / lámpara tradicional.
- Compruebe que sus dispositivos estén conectados correctamente y no entreguen un pico de voltaje a la bombilla / lámpara, causando sobrecalentamiento / falla.
- El bulbo / lámpara debe mantenerse libre de contaminación.
- El buen estado de los contactos del portalámparas es importante para garantizar el funcionamiento correcto del foco / lámpara.
- Desconecte el suministro de la red antes de instalar o quitar el foco / lámpara.
- Asegúrese de que la bombilla / lámpara esté fría antes de retirarla.

Advertencia: Suspnda el uso si está dañado.

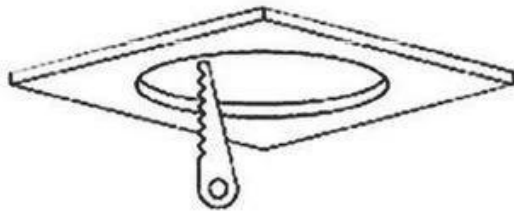
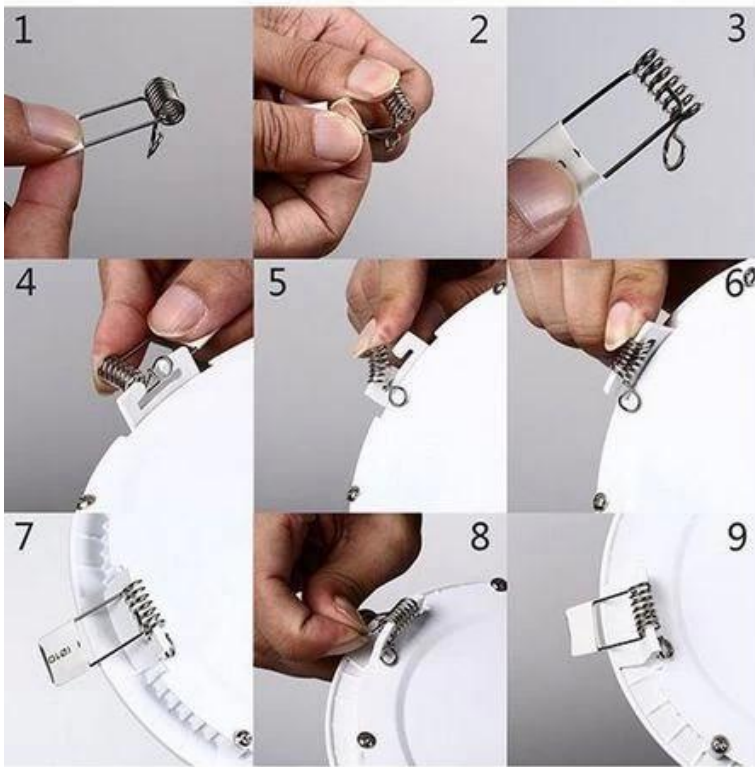
Application



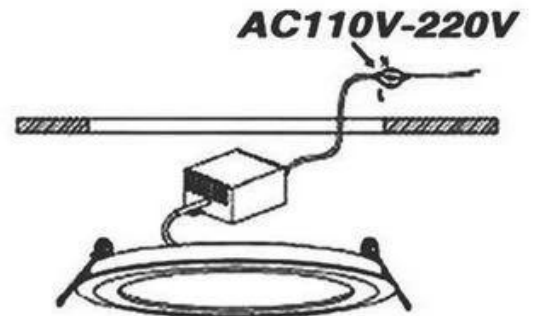
Paquete:

1 PC bombilla LED por caja de color, luego 20 unids embalado en un cartón estándar de la exportación. (1pc / caja de color, 20pcs / carton)

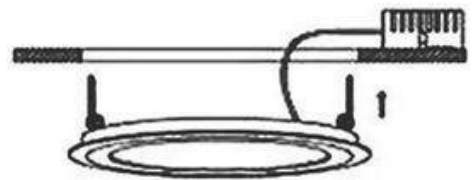
Installation instructions



1. Trepanning



2. Connection



3. Installation



4. Done

Política de devolución:

Proporcionamos una GARANTÍA LIMITADA DE DOS AÑOS GRATIS basada en un uso diario promedio de 4 horas para este artículo.

En caso de que se requieran devoluciones:

Paso 1) Contáctenos con este correo electrónico del sitio web.

Paso 2) Proporcione tantos detalles como sea posible sobre el problema que está teniendo.

Paso 3) Se emitirá la autorización para devolver el artículo.

Paso 4) Devuelva el artículo para el reemplazo o reembolso acordado.

PREGUNTAS MÁS FRECUENTES:

Q1. ¿Es usted un fabricante?

A1: sí, somos un fabricante experimentado con nuestros propios moldes y líneas de

producción.

Q2. ¿qué hay de la calidad de los productos?

A2: nuestros técnicos y equipos de control de calidad prueban los productos uno a uno utilizando línea envejecida, dispositivos profesionales e instrumentos para garantizar la calidad de todos los productos.

Q3. ¿Qué tal el precio?

A3: Somos un fabricante y siempre ofrecemos a nuestros clientes los precios más competitivos.

Q4. ¿Cómo hacer un pedido?

A4: contacto con el servicio en línea, o nos envió un correo electrónico directamente, le responderemos con precio del producto, especificaciones, embalaje, etc. pronto. Gracias.

Q5. ¿Puedo comprar muestras de usted?

A5: ¡Sí! Le invitamos a colocar la orden de la muestra para probar nuestra calidad superior y servicio, las muestras mezcladas son aceptables.

Q6. ¿Puedo visitar su fábrica?

A6: Sí, bienvenido a visitar nuestra fábrica a su hora conveniente.

Q7. ¿Cómo puedo hacer pedidos de OEM o ODM?

A7: tenemos diferentes procesos de impresión para diferentes pedidos de OEM / ODM. Póngase en contacto con nosotros con el servicio en línea o envíenos un correo electrónico directamente.

Q8. ¿Cómo debo pagar mis pedidos?

A8: puede pagar por T / T, L / C a primera vista estaría disponible para el banco calificado y MOQ requerido para cada pedido.

Logística:

Orden de la muestra de la nave por DHL, UPS, FedEx, TNT, EMS, etc.

Para la entrega masiva de pedidos, puede ser opcional con los términos de Exwork, FOB, CNF, CIF por aire o por mar en función del reenviador del comprador o el nuestro



Certificaciones

Producer: KAILIN LIGHTING-INNOTECH INDUSTRIAL CO.,LTD.
QSO: 38415 and others 15125790
Audit Type: Full Audit



Auditee: KAILIN LIGHTING-INNOTECH INDUSTRIAL CO.,LTD.
Audit Date From: 14/12/2016
Audit Date To: 15/12/2016
Copy Date of Audit: Please refer to the producer profile in the BSCI platform
Auditing Company: TÜV SÜD
Auditor's Name(s): Kelly Zhao/Lead
Auditing Branch (if applicable): TÜV SÜD China

BSCI Audit Summary Report

This is an extract of the on line Audit Report. The complete report is available in the BSCI Platform. Access: www.bscipatform.org, for entitled users only.
All rights reserved. No part of this publication may be reproduced, translated, stored in retrieval system, or transmitted, in any form or by any means, electronic, mechanical, photocopying, recording or otherwise, without the prior written permission of TÜV SÜD.

BSCI logo and www.bscipatform.org

ATTESTATION OF CONFORMITY

DEKRA

Issued to: Innotech Industrial Co., Ltd
#1201, 12/F., Anhui Building, NO.6007, Shennan Road, Shenzhen, China
For the product: Self-ballasted LED-lamp
Trade name: ...
Type/Model: (Details refer to model list in attachment of test report)
Ratings: 220-240 Vac, 50 Hz; (Details refer to model list in attachment of test report)
Manufactured by: Kailin Lighting Co., Ltd
FOXIN INDUSTRIAL DISTRICT, DALANG TOWN, DONGGUAN CITY,
GUANGDONG, CHINA
Requirements: EN 62569-2012 + A1:2015
EN 62471:2009
EN 62493:2010
IEC TR 62738:2014.

This Attestation is granted on account of an examination by DEKRA, the results of which are laid down in a confidential file no. 4321958.50 + 4321958.51 + 4321958.51.
This Attestation implies that the examined types are in accordance with the standards designated under the Low Voltage Directive (LVD) 2014/35/EU.
The examination has been carried out on one single specimen or several specimens of the product, submitted by the manufacturer. The Attestation does not include an assessment of the manufacturer's production. Conformity of his production with the specimen tested by DEKRA is not the responsibility of DEKRA.

Guangzhou, 18 August 2016 Number: 4321958.51+AOC

DEKRA Testing and Certification (Shanghai) Ltd.,
Guangzhou branch
Rosa Zhou
Certification Manager

© Integral publication of this attestation and adjoining reports is allowed

DEKRA Testing and Certification (Shanghai) Ltd., Guangzhou branch
Block A3 No 30 Dajun Road, Science City, Guangzhou, Hi-Tech Industrial Dev. Zone, 510663 Guangzhou, China
T +86 20 8691 8000 F +86 20 8691 2001 www.dekra-verification.com



Test Report Number: LCZC16060123-EE Date: Jun. 14, 2016 Page 1 of 30

Applicant: INNOTECH INDUSTRIAL COMPANY LIMITED
Address: #1201, 12/F., Anhui Building, No. 6007, Shennan Road, Shenzhen, China
Date of Received: May 12, 2016 & May 26, 2016 & Jun. 06, 2016
Testing Period: From May 12, 2016 to Jun. 06, 2016
Report on the submitted sample said to be:
Item Name: LED Lamp
Model No.: KLL1917P-2.5, KLL1917P-3, KLL438P-3, KLL445P-4, KLL445S-4, KLL438P-5,
KLL176P-6, KLL176S-10, KLL445S-3, KLL176S-9, KLL176S-10, KLL438P-4,
KLL438P-5, KLL438P-6, KLL438P-7, KLL438P-8, KLL438P-9, KLL438P-10,
KLL438P-11, KLL438P-12, KLL438P-13, KLL438P-14, KLL438P-15, KLL438P-16,
KLL438P-17, KLL438P-18, KLL438P-19, KLL438P-20, KLL438P-21, KLL438P-22,
KLL438P-23, KLL438P-24, KLL438P-25, KLL438P-26, KLL438P-27, KLL438P-28,
KLL438P-29, KLL438P-30, KLL438P-31, KLL438P-32, KLL438P-33, KLL438P-34,
KLL438P-35, KLL438P-36, KLL438P-37, KLL438P-38, KLL438P-39, KLL438P-40,
KLL438P-41, KLL438P-42, KLL438P-43, KLL438P-44, KLL438P-45, KLL438P-46,
KLL438P-47, KLL438P-48, KLL438P-49, KLL438P-50, KLL438P-51, KLL438P-52,
KLL438P-53, KLL438P-54, KLL438P-55, KLL438P-56, KLL438P-57, KLL438P-58,
KLL438P-59, KLL438P-60, KLL438P-61, KLL438P-62, KLL438P-63, KLL438P-64,
KLL438P-65, KLL438P-66, KLL438P-67, KLL438P-68, KLL438P-69, KLL438P-70,
KLL438P-71, KLL438P-72, KLL438P-73, KLL438P-74, KLL438P-75, KLL438P-76,
KLL438P-77, KLL438P-78, KLL438P-79, KLL438P-80, KLL438P-81, KLL438P-82,
KLL438P-83, KLL438P-84, KLL438P-85, KLL438P-86, KLL438P-87, KLL438P-88,
KLL438P-89, KLL438P-90, KLL438P-91, KLL438P-92, KLL438P-93, KLL438P-94,
KLL438P-95, KLL438P-96, KLL438P-97, KLL438P-98, KLL438P-99, KLL438P-100,
KLL438P-101, KLL438P-102, KLL438P-103, KLL438P-104, KLL438P-105, KLL438P-106,
KLL438P-107, KLL438P-108, KLL438P-109, KLL438P-110, KLL438P-111, KLL438P-112,
KLL438P-113, KLL438P-114, KLL438P-115, KLL438P-116, KLL438P-117, KLL438P-118,
KLL438P-119, KLL438P-120, KLL438P-121, KLL438P-122, KLL438P-123, KLL438P-124,
KLL438P-125, KLL438P-126, KLL438P-127, KLL438P-128, KLL438P-129, KLL438P-130,
KLL438P-131, KLL438P-132, KLL438P-133, KLL438P-134, KLL438P-135, KLL438P-136,
KLL438P-137, KLL438P-138, KLL438P-139, KLL438P-140, KLL438P-141, KLL438P-142,
KLL438P-143, KLL438P-144, KLL438P-145, KLL438P-146, KLL438P-147, KLL438P-148,
KLL438P-149, KLL438P-150, KLL438P-151, KLL438P-152, KLL438P-153, KLL438P-154,
KLL438P-155, KLL438P-156, KLL438P-157, KLL438P-158, KLL438P-159, KLL438P-160,
KLL438P-161, KLL438P-162, KLL438P-163, KLL438P-164, KLL438P-165, KLL438P-166,
KLL438P-167, KLL438P-168, KLL438P-169, KLL438P-170, KLL438P-171, KLL438P-172,
KLL438P-173, KLL438P-174, KLL438P-175, KLL438P-176, KLL438P-177, KLL438P-178,
KLL438P-179, KLL438P-180, KLL438P-181, KLL438P-182, KLL438P-183, KLL438P-184,
KLL438P-185, KLL438P-186, KLL438P-187, KLL438P-188, KLL438P-189, KLL438P-190,
KLL438P-191, KLL438P-192, KLL438P-193, KLL438P-194, KLL438P-195, KLL438P-196,
KLL438P-197, KLL438P-198, KLL438P-199, KLL438P-200, KLL438P-201, KLL438P-202,
KLL438P-203, KLL438P-204, KLL438P-205, KLL438P-206, KLL438P-207, KLL438P-208,
KLL438P-209, KLL438P-210, KLL438P-211, KLL438P-212, KLL438P-213, KLL438P-214,
KLL438P-215, KLL438P-216, KLL438P-217, KLL438P-218, KLL438P-219, KLL438P-220,
KLL438P-221, KLL438P-222, KLL438P-223, KLL438P-224, KLL438P-225, KLL438P-226,
KLL438P-227, KLL438P-228, KLL438P-229, KLL438P-230, KLL438P-231, KLL438P-232,
KLL438P-233, KLL438P-234, KLL438P-235, KLL438P-236, KLL438P-237, KLL438P-238,
KLL438P-239, KLL438P-240, KLL438P-241, KLL438P-242, KLL438P-243, KLL438P-244,
KLL438P-245, KLL438P-246, KLL438P-247, KLL438P-248, KLL438P-249, KLL438P-250,
KLL438P-251, KLL438P-252, KLL438P-253, KLL438P-254, KLL438P-255, KLL438P-256,
KLL438P-257, KLL438P-258, KLL438P-259, KLL438P-260, KLL438P-261, KLL438P-262,
KLL438P-263, KLL438P-264, KLL438P-265, KLL438P-266, KLL438P-267, KLL438P-268,
KLL438P-269, KLL438P-270, KLL438P-271, KLL438P-272, KLL438P-273, KLL438P-274,
KLL438P-275, KLL438P-276, KLL438P-277, KLL438P-278, KLL438P-279, KLL438P-280,
KLL438P-281, KLL438P-282, KLL438P-283, KLL438P-284, KLL438P-285, KLL438P-286,
KLL438P-287, KLL438P-288, KLL438P-289, KLL438P-290, KLL438P-291, KLL438P-292,
KLL438P-293, KLL438P-294, KLL438P-295, KLL438P-296, KLL438P-297, KLL438P-298,
KLL438P-299, KLL438P-300, KLL438P-301, KLL438P-302, KLL438P-303, KLL438P-304,
KLL438P-305, KLL438P-306, KLL438P-307, KLL438P-308, KLL438P-309, KLL438P-310,
KLL438P-311, KLL438P-312, KLL438P-313, KLL438P-314, KLL438P-315, KLL438P-316,
KLL438P-317, KLL438P-318, KLL438P-319, KLL438P-320, KLL438P-321, KLL438P-322,
KLL438P-323, KLL438P-324, KLL438P-325, KLL438P-326, KLL438P-327, KLL438P-328,
KLL438P-329, KLL438P-330, KLL438P-331, KLL438P-332, KLL438P-333, KLL438P-334,
KLL438P-335, KLL438P-336, KLL438P-337, KLL438P-338, KLL438P-339, KLL438P-340,
KLL438P-341, KLL438P-342, KLL438P-343, KLL438P-344, KLL438P-345, KLL438P-346,
KLL438P-347, KLL438P-348, KLL438P-349, KLL438P-350, KLL438P-351, KLL438P-352,
KLL438P-353, KLL438P-354, KLL438P-355, KLL438P-356, KLL438P-357, KLL438P-358,
KLL438P-359, KLL438P-360, KLL438P-361, KLL438P-362, KLL438P-363, KLL438P-364,
KLL438P-365, KLL438P-366, KLL438P-367, KLL438P-368, KLL438P-369, KLL438P-370,
KLL438P-371, KLL438P-372, KLL438P-373, KLL438P-374, KLL438P-375, KLL438P-376,
KLL438P-377, KLL438P-378, KLL438P-379, KLL438P-380, KLL438P-381, KLL438P-382,
KLL438P-383, KLL438P-384, KLL438P-385, KLL438P-386, KLL438P-387, KLL438P-388,
KLL438P-389, KLL438P-390, KLL438P-391, KLL438P-392, KLL438P-393, KLL438P-394,
KLL438P-395, KLL438P-396, KLL438P-397, KLL438P-398, KLL438P-399, KLL438P-400,
KLL438P-401, KLL438P-402, KLL438P-403, KLL438P-404, KLL438P-405, KLL438P-406,
KLL438P-407, KLL438P-408, KLL438P-409, KLL438P-410, KLL438P-411, KLL438P-412,
KLL438P-413, KLL438P-414, KLL438P-415, KLL438P-416, KLL438P-417, KLL438P-418,
KLL438P-419, KLL438P-420, KLL438P-421, KLL438P-422, KLL438P-423, KLL438P-424,
KLL438P-425, KLL438P-426, KLL438P-427, KLL438P-428, KLL438P-429, KLL438P-430,
KLL438P-431, KLL438P-432, KLL438P-433, KLL438P-434, KLL438P-435, KLL438P-436,
KLL438P-437, KLL438P-438, KLL438P-439, KLL438P-440, KLL438P-441, KLL438P-442,
KLL438P-443, KLL438P-444, KLL438P-445, KLL438P-446, KLL438P-447, KLL438P-448,
KLL438P-449, KLL438P-450, KLL438P-451, KLL438P-452, KLL438P-453, KLL438P-454,
KLL438P-455, KLL438P-456, KLL438P-457, KLL438P-458, KLL438P-459, KLL438P-460,
KLL438P-461, KLL438P-462, KLL438P-463, KLL438P-464, KLL438P-465, KLL438P-466,
KLL438P-467, KLL438P-468, KLL438P-469, KLL438P-470, KLL438P-471, KLL438P-472,
KLL438P-473, KLL438P-474, KLL438P-475, KLL438P-476, KLL438P-477, KLL438P-478,
KLL438P-479, KLL438P-480, KLL438P-481, KLL438P-482, KLL438P-483, KLL438P-484,
KLL438P-485, KLL438P-486, KLL438P-487, KLL438P-488, KLL438P-489, KLL438P-490,
KLL438P-491, KLL438P-492, KLL438P-493, KLL438P-494, KLL438P-495, KLL438P-496,
KLL438P-497, KLL438P-498, KLL438P-499, KLL438P-500, KLL438P-501, KLL438P-502,
KLL438P-503, KLL438P-504, KLL438P-505, KLL438P-506, KLL438P-507, KLL438P-508,
KLL438P-509, KLL438P-510, KLL438P-511, KLL438P-512, KLL438P-513, KLL438P-514,
KLL438P-515, KLL438P-516, KLL438P-517, KLL438P-518, KLL438P-519, KLL438P-520,
KLL438P-521, KLL438P-522, KLL438P-523, KLL438P-524, KLL438P-525, KLL438P-526,
KLL438P-527, KLL438P-528, KLL438P-529, KLL438P-530, KLL438P-531, KLL438P-532,
KLL438P-533, KLL438P-534, KLL438P-535, KLL438P-536, KLL438P-537, KLL438P-538,
KLL438P-539, KLL438P-540, KLL438P-541, KLL438P-542, KLL438P-543, KLL438P-544,
KLL438P-545, KLL438P-546, KLL438P-547, KLL438P-548, KLL438P-549, KLL438P-550,
KLL438P-551, KLL438P-552, KLL438P-553, KLL438P-554, KLL438P-555, KLL438P-556,
KLL438P-557, KLL438P-558, KLL438P-559, KLL438P-560, KLL438P-561, KLL438P-562,
KLL438P-563, KLL438P-564, KLL438P-565, KLL438P-566, KLL438P-567, KLL438P-568,
KLL438P-569, KLL438P-570, KLL438P-571, KLL438P-572, KLL438P-573, KLL438P-574,
KLL438P-575, KLL438P-576, KLL438P-577, KLL438P-578, KLL438P-579, KLL438P-580,
KLL438P-581, KLL438P-582, KLL438P-583, KLL438P-584, KLL438P-585, KLL438P-586,
KLL438P-587, KLL438P-588, KLL438P-589, KLL438P-590, KLL438P-591, KLL438P-592,
KLL438P-593, KLL438P-594, KLL438P-595, KLL438P-596, KLL438P-597, KLL438P-598,
KLL438P-599, KLL438P-600, KLL438P-601, KLL438P-602, KLL438P-603, KLL438P-604,
KLL438P-605, KLL438P-606, KLL438P-607, KLL438P-608, KLL438P-609, KLL438P-610,
KLL438P-611, KLL438P-612, KLL438P-613, KLL438P-614, KLL438P-615, KLL438P-616,
KLL438P-617, KLL438P-618, KLL438P-619, KLL438P-620, KLL438P-621, KLL438P-622,
KLL438P-623, KLL438P-624, KLL438P-625, KLL438P-626, KLL438P-627, KLL438P-628,
KLL438P-629, KLL438P-630, KLL438P-631, KLL438P-632, KLL438P-633, KLL438P-634,
KLL438P-635, KLL438P-636, KLL438P-637, KLL438P-638, KLL438P-639, KLL438P-640,
KLL438P-641, KLL438P-642, KLL438P-643, KLL438P-644, KLL438P-645, KLL438P-646,
KLL438P-647, KLL438P-648, KLL438P-649, KLL438P-650, KLL438P-651, KLL438P-652,
KLL438P-653, KLL438P-654, KLL438P-655, KLL438P-656, KLL438P-657, KLL438P-658,
KLL438P-659, KLL438P-660, KLL438P-661, KLL438P-662, KLL438P-663, KLL438P-664,
KLL438P-665, KLL438P-666, KLL438P-667, KLL438P-668, KLL438P-669, KLL438P-670,
KLL438P-671, KLL438P-672, KLL438P-673, KLL438P-674, KLL438P-675, KLL438P-676,
KLL438P-677, KLL438P-678, KLL438P-679, KLL438P-680, KLL438P-681, KLL438P-682,
KLL438P-683, KLL438P-684, KLL438P-685, KLL438P-686, KLL438P-687, KLL438P-688,
KLL438P-689, KLL438P-690, KLL438P-691, KLL438P-692, KLL438P-693, KLL438P-694,
KLL438P-695, KLL438P-696, KLL438P-697, KLL438P-698, KLL438P-699, KLL438P-700,
KLL438P-701, KLL438P-702, KLL438P-703, KLL438P-704, KLL438P-705, KLL438P-706,
KLL438P-707, KLL438P-708, KLL438P-709, KLL438P-710, KLL438P-711, KLL438P-712,
KLL438P-713, KLL438P-714, KLL438P-715, KLL438P-716, KLL438P-717, KLL438P-718,
KLL438P-719, KLL438P-720, KLL438P-721, KLL438P-722, KLL438P-723, KLL438P-724,
KLL438P-725, KLL438P-726, KLL438P-727, KLL438P-728, KLL438P-729, KLL438P-730,
KLL438P-731, KLL438P-732, KLL438P-733, KLL438P-734, KLL438P-735, KLL438P-736,
KLL438P-737, KLL438P-738, KLL438P-739, KLL438P-740, KLL438P-741, KLL438P-742,
KLL438P-743, KLL438P-744, KLL438P-745, KLL438P-746, KLL438P-747, KLL438P-748,
KLL438P-749, KLL438P-750, KLL438P-751, KLL438P-752, KLL438P-753, KLL438P-754,
KLL438P-755, KLL438P-756, KLL438P-757, KLL438P-758, KLL438P-759, KLL438P-760,
KLL438P-761, KLL438P-762, KLL438P-763, KLL438P-764, KLL438P-765, KLL438P-766,
KLL438P-767, KLL438P-768, KLL438P-769, KLL438P-770, KLL438P-771, KLL438P-772,
KLL438P-773, KLL438P-774, KLL438P-775, KLL438P-776, KLL438P-777, KLL438P-778,
KLL438P-779, KLL438P-780, KLL438P-781, KLL438P-782, KLL438P-783, KLL438P-784,
KLL438P-785, KLL438P-786, KLL438P-787, KLL438P-788, KLL438P-789, KLL438P-790,
KLL438P-791, KLL438P-792, KLL438P-793, KLL438P-794, KLL438P-795, KLL438P-796,
KLL438P-797, KLL438P-798, KLL438P-799, KLL438P-800, KLL438P-801, KLL438P-802,
KLL438P-803, KLL438P-804, KLL438P-805, KLL438P-806, KLL438P-807, KLL438P-808,
KLL438P-809, KLL438P-810, KLL438P-811, KLL438P-812, KLL438P-813, KLL438P-814,
KLL438P-815, KLL438P-816, KLL438P-817, KLL438P-818, KLL438P-819, KLL438P-820,
KLL438P-821, KLL438P-822, KLL438P-823, KLL438P-824, KLL438P-825, KLL438P-826,
KLL438P-827, KLL438P-828, KLL438P-829, KLL438P-830, KLL438P-831, KLL438P-832,
KLL438P-833, KLL438P-834, KLL438P-835, KLL438P-836, KLL438P-837, KLL438P-838,
KLL438P-839, KLL438P-840, KLL438P-841, KLL438P-842, KLL438P-843, KLL438P-844,
KLL438P-845, KLL438P-846, KLL438P-847, KLL438P-848, KLL438P-849, KLL438P-850,
KLL438P-851, KLL438P-852, KLL438P-853, KLL438P-854, KLL438P-855, KLL438P-856,
KLL438P-857, KLL438P-858, KLL438P-859, KLL438P-860, KLL438P-861, KLL438P-862,
KLL438P-863, KLL438P-864, KLL438P-865, KLL438P-866, KLL438P-867, KLL438P-868,
KLL438P-869, KLL438P-870, KLL438P-871, KLL438P-872, KLL438P-873, KLL438P-874,
KLL438P-875, KLL438P-876, KLL438P-877, KLL438P-878, KLL438P-879, KLL438P-880,
KLL438P-881, KLL438P-882, KLL438P-883, KLL438P-884, KLL438P-885, KLL438P-886,
KLL438P-887, KLL438P-888, KLL438P-889, KLL438P-890, KLL438P-891, KLL438P-892,
KLL438P-893, KLL438P-894, KLL438P-895, KLL438P-896, KLL438P-897, KLL438P-898,
KLL438P-899, KLL438P-900, KLL438P-901, KLL438P-902, KLL438P-903, KLL438P-904,
KLL438P-905, KLL438P-906, KLL438P-907, KLL438P-908, KLL438P-909, KLL438P-910,
KLL438P-911, KLL438P-912, KLL438P-913, KLL438P-914, KLL438P-915, KLL438P-916,
KLL438P-917, KLL438P-918, KLL438P-919, KLL438P-920, KLL438P-921, KLL438P-922,
KLL438P-923, KLL438P-924, KLL438P-925, KLL438P-926, KLL438P-927, KLL438P-928,
KLL438P-929, KLL438P-930, KLL438P-931, KLL438P-932, KLL438P-933, KLL438P-934,
KLL438P-935, KLL438P-936, KLL438P-937, KLL438P-938, KLL438P-939, KLL438P-940,
KLL438P-941, KLL438P-942, KLL438P-943, KLL438P-944, KLL438P-945, KLL4

Factory Show



Automatic SMT



Welding Line



Automatic Bulb Sealing Line



Driver Production Line



Assembly Line



Automatic Base Mounting Line



Automatic Aging Line



Life Time Testing



R&D Department



Office



Show Room



Factory Building

Exposición y & Justa

Exhibition & Fair

